

- M1.(a) (i) A – (cell) wall 1
- B – cytoplasm 1
- C – plasmid 1
- (ii) bacterium cell has cell wall / no nucleus / no mitochondria / plasmids present
accept its DNA / genetic material is not enclosed / it has no nuclear membrane
it = bacterium cell
accept converse for animal cell
ignore flagella 1
- (iii) any **one** from:
 - chloroplast
ignore chlorophyll
 - (permanent) vacuole 1
- (b) (Long tail) moves the sperm / allows the sperm to swim 1
- towards the egg
allow correct reference to other named parts of the female reproductive system 1
- (Mitochondria) release energy (for movement / swimming)
allow supply / produce / provide 1
- in respiration 1

[9]

M2.(a)	nucleus labelled correctly	1
	cell membrane labelled correctly	1
(b)	mitosis	1
(c)	electron (microscope)	1
(d)	higher magnification	1
(e)	45 (mm)	1
	45 / 250 or 0.18 (mm) <i>allow ecf</i>	1
	180 (μm)	1
	<i>allow 180 (μm) with no working shown for 3 marks</i>	
(f)	0.2 μm	1

[9]

M3.(a) (i) 25°C 1

(ii) pathogens 1

(b) D 1

more / most bacteria killed
accept biggest area / ring where no bacteria are growing 1

(c) viruses live inside cells 1

[5]

M4.(a) (i) C and D

no mark if more than one box is ticked

1

(ii) any **one** from:

*do **not** allow if other cell parts are given in a list*

- (have) cell wall(s)
- (have) vacuole(s)

1

(b) (i) **A**

apply list principle

1

(ii) **D**

apply list principle

1

(c) respiration

apply list principle

1

[5]

M5.(a) (i) A = nucleus 1

B = (cell) membrane 1

(ii) any **two** from:
ignore shape

- no (cell) wall
- no (large / permanent) vacuole
- no chloroplasts / chlorophyll

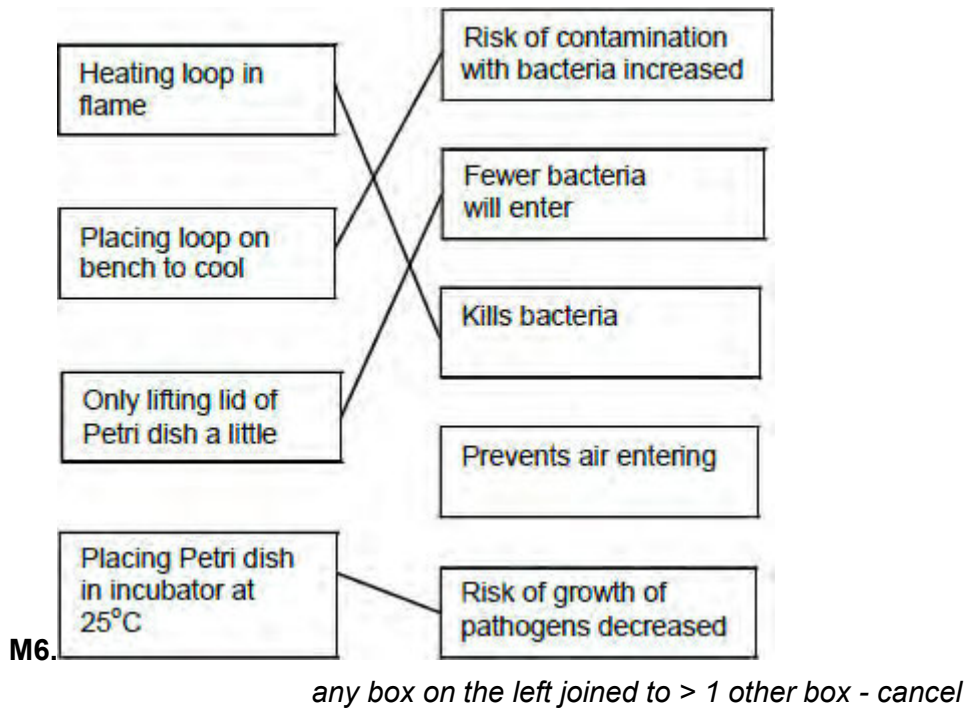
2

(b) because high to low oxygen / concentration **or** down gradient
allow 'more / a lot of oxygen molecules outside'
ignore along / across gradient

1

(c) a tissue 1

[6]



[4]

M7.(a) (i) A = (cell) membrane

1

B = cytoplasm

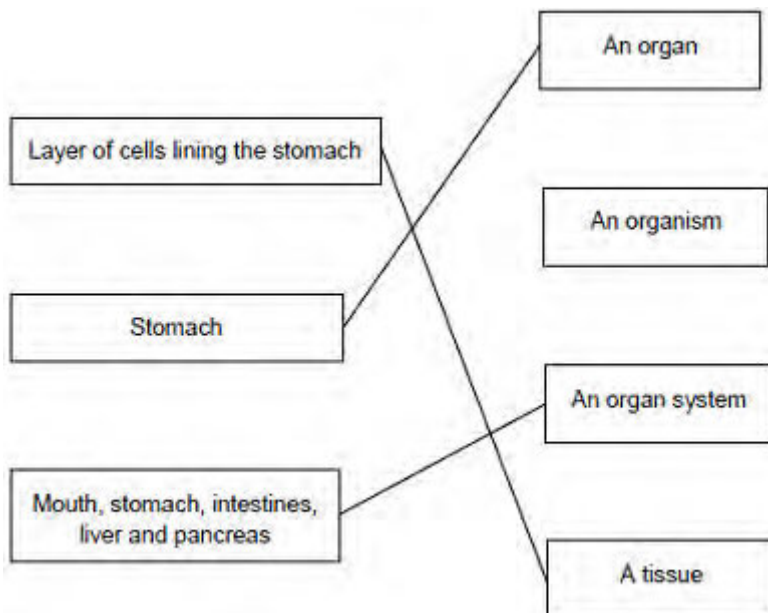
do not accept cytoplasm

1

(ii) To control the activities of the cell

1

(b)



extra lines cancel

3

[6]

M8.(a) (i) Chromosomes 1

(ii) Characteristics 1

(iii) Classify 1

(b) Plants
ignore algae 1

[4]

M9.(a) A (inoculating / wire) loop 1

B Petri dish

allow (agar) plate

ignore ref to culture medium

1

(b) (i) to kill (unwanted) bacteria / microorganisms / microbes

allow fungi

ignore viruses / germs

1

(ii) Using a flame

1

(iii) any **one** from:

- so bacteria / microorganisms / microbes / pathogens / fungi (growing in dish) do not get out

ignore reference to gases

ignore viruses / germs

- so bacteria / microorganisms / microbes / pathogens / fungi (from the air) do not get in.

ignore viruses / germs

1

(c) 25 °C

1

[6]

M10.(a) **A** = nucleus

allow phonetic spelling

1

B = (cell) membrane

1

(b) for repair / growth **or** to replace cells
ignore new cells / skin

1

(c) (i) embryos

1

(ii) paralysis

1

[5]